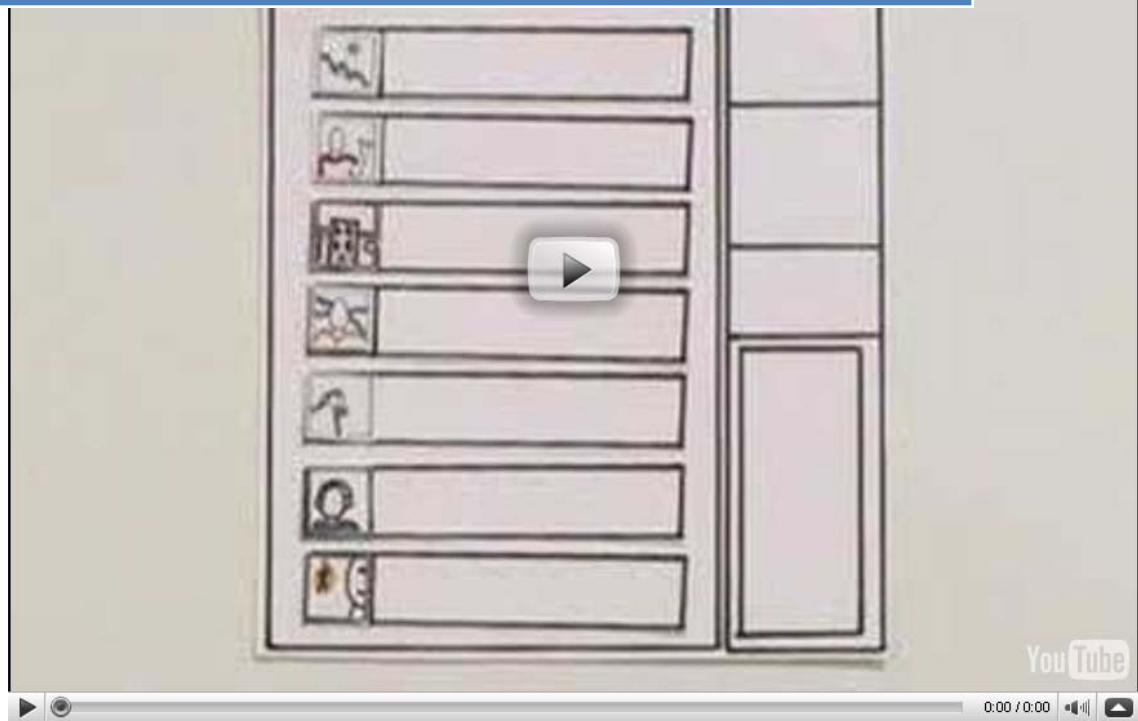


How-To...

Incorporate a YouTube Video into PowerPoint 2007

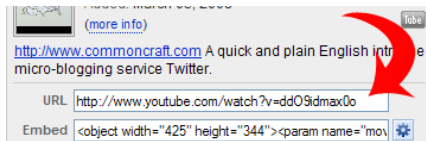



By Jenny Wakefield
jenny@wakefield.net
11-Nov-2008

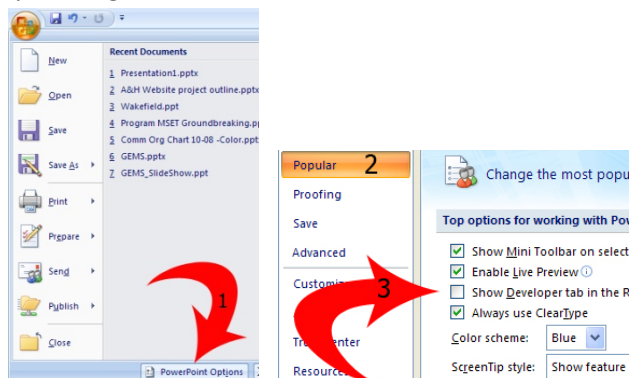
Incorporate a YouTube Video into PowerPoint

This short tutorial explains how you can insert a YouTube video into a PowerPoint 2007 presentation on a PC (this does not work on a Mac). The requirements for successful completion are that you have a computer with PowerPoint, Notepad or Word, a web browser, and an Internet connection that allows you to connect to the YouTube website.

1. Go to YouTube.com (<http://www.youtube.com>) and find the video you would like to incorporate into a PowerPoint presentation. Next to the video, to the right on the screen, is a box that states the URL to that particular video.

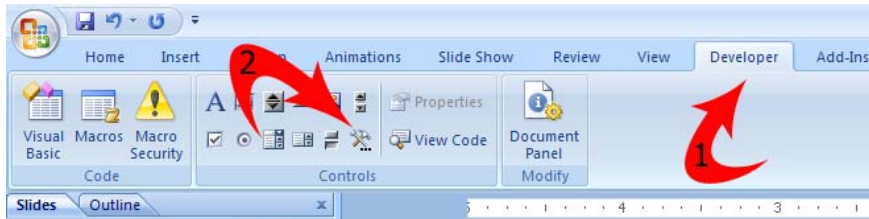


2. Copy the link to the computer clipboard by highlighting the link and clicking both the keyboard keys **Ctrl** and **C** at the same time.
3. Open Notepad or Word and paste the link from the clipboard into the text editor.
4. Remove from the link the word *watch?* and the equal sign = and add a slash / after the letter v
For example: <http://www.youtube.com/watch?v=ddO9idmax0o>
Becomes: <http://www.youtube.com/v/ddO9idmax0o>
5. Copy the new URL you created to the clipboard as in step 2 above.
6. Open up PowerPoint and an empty slide where you would like to insert the YouTube video.
7. Check to see if the PowerPoint 'Ribbon-menu' has the tab called *Developer*. If it does – jump to step 10. If it does not, do the following: **Click on the Microsoft icon** in the top left corner of the screen:

8. Choose the button **PowerPoint Options** (1). Click **Popular** (2), and then under the top options for working with PowerPoint, check the **Show Developer tab in the Ribbon** (3) check box. Finish by clicking **OK**.

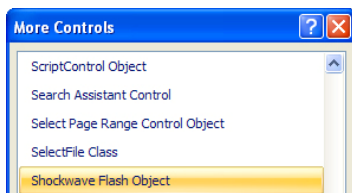


Incorporate a YouTube Video into PowerPoint

9. The Developer tab should now show in the ribbon.
10. Click the **Developer tab** (1) and choose the **Controls** group, then click **More Controls** (2).



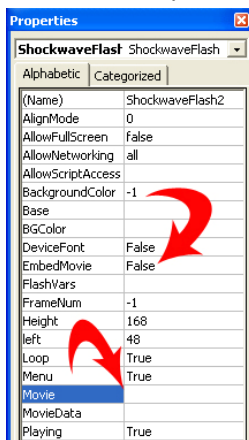
11. Use the scroll bar to scroll down the menu and click **Shockwave Flash Object**, then click **OK**.



12. Use your mouse cursor to draw a large box on the PowerPoint slide.

13. **Right click** the box and choose **Properties/Custom**.

14. Paste the link you created in step 3 above, into **Movie**.



15. Make sure **EmbedMovie** reads **False** before you close the objects box.
16. Save your PowerPoint.
17. When you show your PowerPoint on a computer with Internet connection the slide with the YouTube video will show and start on click.

Incorporate a YouTube Video into PowerPoint

Reference List - Software tools used to create this tutorial:

- Adobe PhotoShop CS3
- Microsoft PowerPoint 2007
- Microsoft Word 2007
- Microsoft Internet Explorer Browser (version 7)
- Adobe Acrobat 8 Professional